

# CERTIFICATE OF LOCATION OF GOVERNMENT CORNER

NORTHEAST Corner of Section 10, Township 106, Range 39, 5TH P.M.

STATE OF MINNESOTA, County of MURRAY

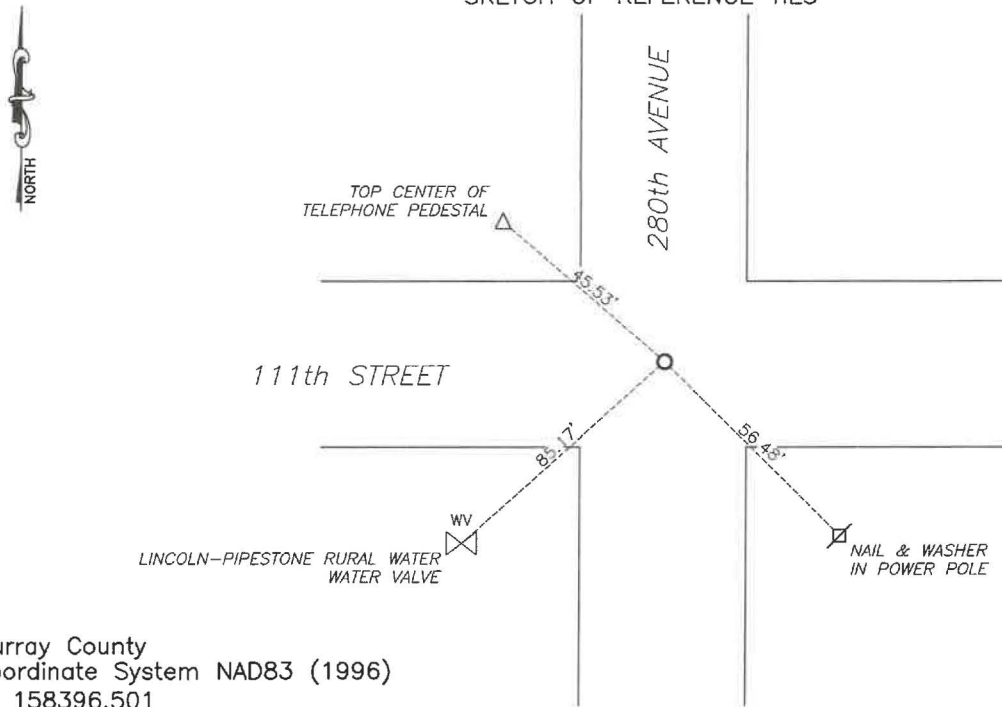
At the corner location shown on the sketch:

☒ On 7/23/2024 found a 8" round concrete monument.  
DATE

☒ left monument as found, ☐ lowered monument, ☐ removed monument (explain)

☒ On 1/16/2025 placed a 5/8" iron with seal #43844 over top of concrete monument  
DATE

SKETCH OF REFERENCE TIES



Murray County  
Coordinate System NAD83 (1996)  
N: 158396.501  
E: 569472.820

WGS84  
LAT: 44°00'28.5562"  
LON: -95°30'09.4997"

Statement of evidence relative to this corner location is on back of page.

I hereby certify that this document and the data contained herein was prepared by me or under my direct supervision.

Daniel L. Buettel  
Daniel L. Buettel  
License No. 43844

3/12/2025  
DATE

MAR 13 2025  
Karen Brown  
MURRAY COUNTY RECORDER

Statement of Evidence

**NORTHEAST CORNER SECTION 10, T106N, R39W of the 5th P.M.**

In September 1858, W.J. Neely surveyed the east township line.

In July of 1861, J.W. Myers surveyed the north, south, and west township lines.

In August of 1861, Wellman & Smoot subdivided the township.

A survey on July 5, 1911 by J.W. Woolstencroft shows a concrete monument at the corner.

1967 - county records show a concrete monument.

May 12, 2012, county records show a found 3/4" iron.

On July 23, 2024 Buelte-Moseng Land Surveying found a 3/4" iron at the location of the corner. We removed the iron and dug with a backhoe, we found a 8" round concrete monument 2.5' below the road surface. Accepted the monument and placed a 3/4" iron along the north side for locating purposes.

Returned on January 16, 2025 and set a 5/8" iron with seal #43844 over top of the concrete monument.